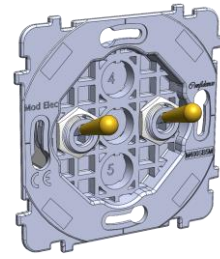


E



EL



S

1 INSTRUCTIONS AND RECOMMENDATIONS



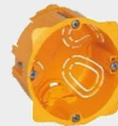
Switch off the mains before commencing any work



Strip the wires back for about 12mm
Cable cross-section 0.5 min / 2.5mm² max



Mechanisms with screw terminals



For single units, use casings 50mm deep,
diameter 67 or 68mm

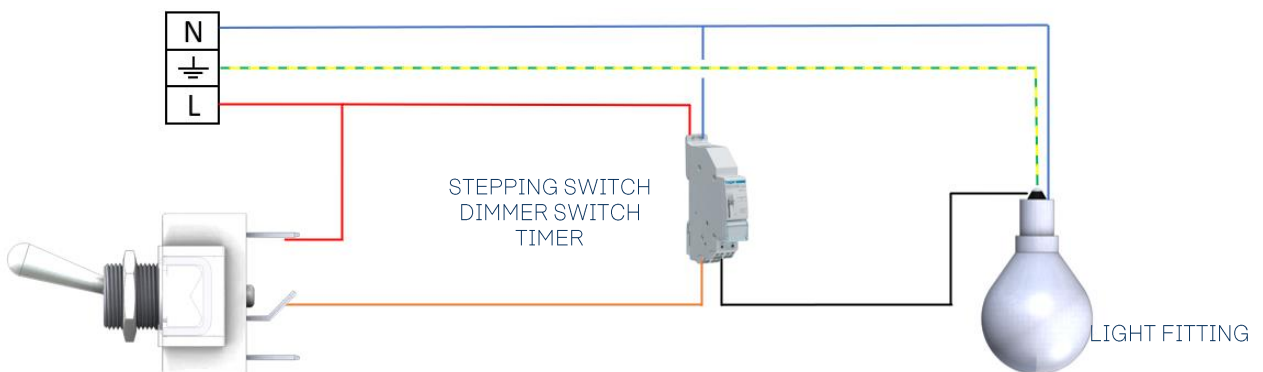
2 WIRING

 **N** neutral – blue cable

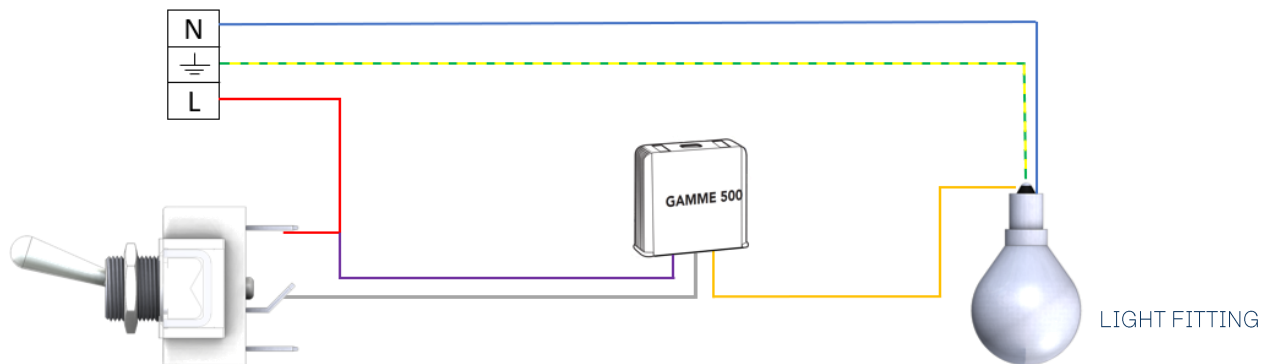
 **L** phase – red cable

  earth – green/yellow cable

Stepping switch or dimmer
switch on distribution board

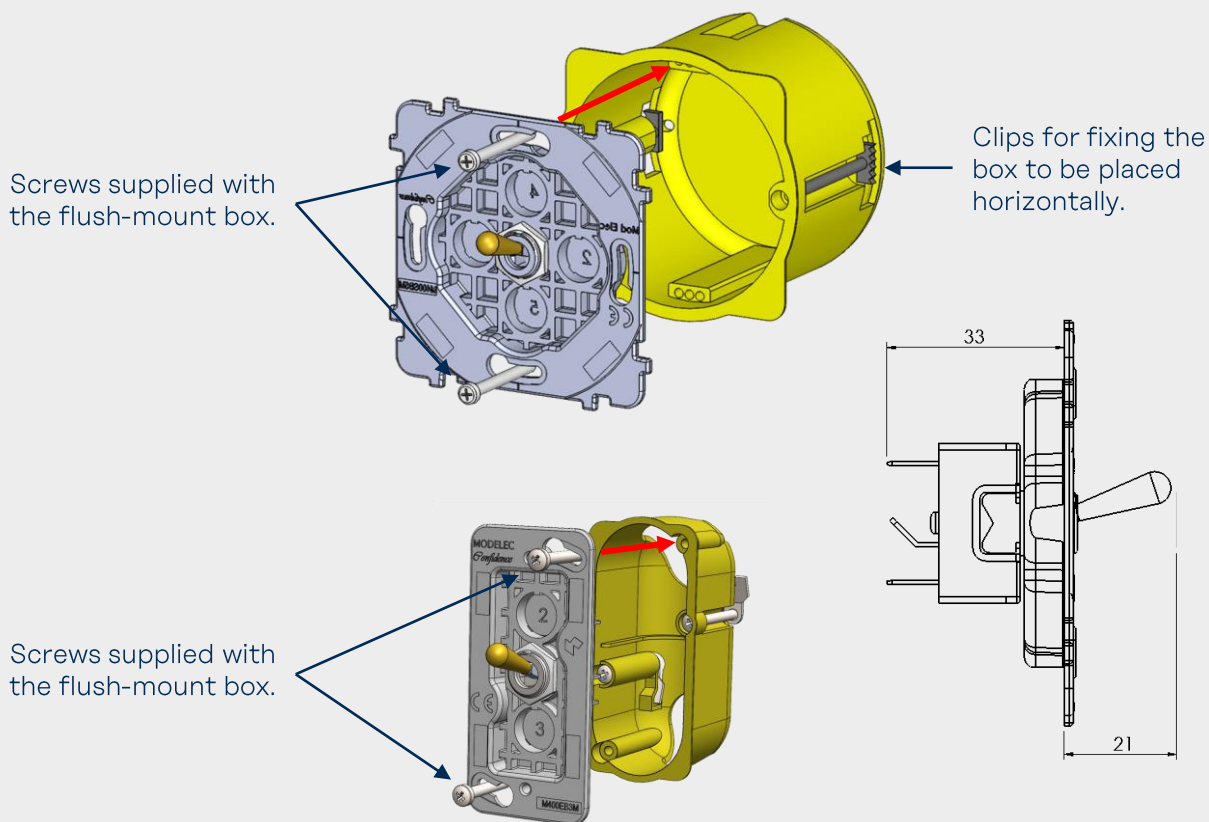


Back box micromodule for
dimmer control (Yokis type)



3 FITTING

After wiring according to the instructions, place the mechanism in the flush-mount box and screw on the plate as shown in the following diagrams:



4 TABLE OF RELEVANT REFERENCES

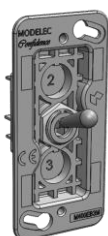
072



073



074

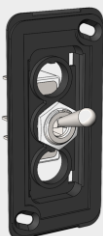


Reference and description:

07x-073G E 1 PUSH-BUTTON
07x-074G E 2 PUSH-BUTTONS
07x-075G E 1 PUSH-BUTTON FOR LED

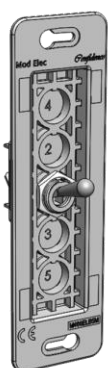
Compatible with:

Confidence Collection



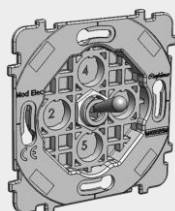
07x-073B E 1 PUSH-BUTTON
07x-074B E 2 PUSH-BUTTONS
07x-075B E 1 PUSH-BUTTON FOR LED

Karo Collection



07x-011G EL 1 PUSH-BUTTON
07x-012G EL 2 ADJACENT PUSH-BUTTONS
07x-013G EL 3 PUSH-BUTTONS
07x-014G EL 2 REMOTE PUSH-BUTTONS

Confidence Collection
Fascination Collection



07x-111G S 1 PUSH-BUTTON
07x-112G S 2 PUSH-BUTTONS
07x-113G S 3 PUSH-BUTTONS

Confidence Collection
Fascination Collection



5 CERTIFICATIONS

The 07x toggle mechanisms comply with the NF EN 60-669-01 standard, according to test report no. 149741-706752A produced by the LCIE on 13/04/2018.

