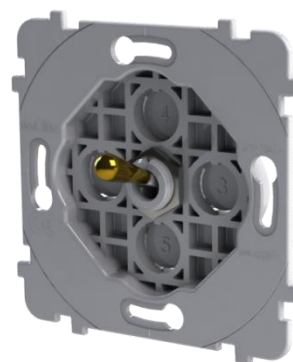
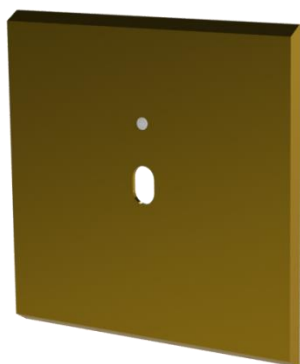




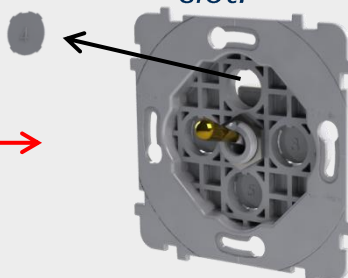
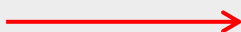
## 1 GENERAL INFORMATION

- **Material:** Polycarbonate (support)
- **Colour:**
  - White
  - Red
  - Green
  - Blue
- **Fitting:** 3 minutes screw / 1 minute magnet
- **Power supply:** 110 / 230V



## 2 FITTING

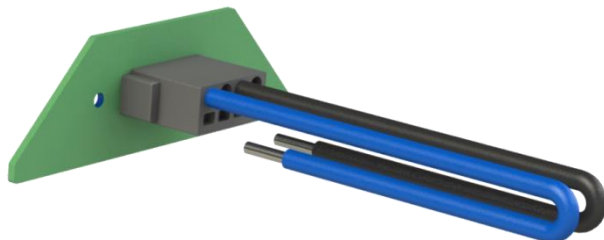
Remove the snap-off tab from its slot.



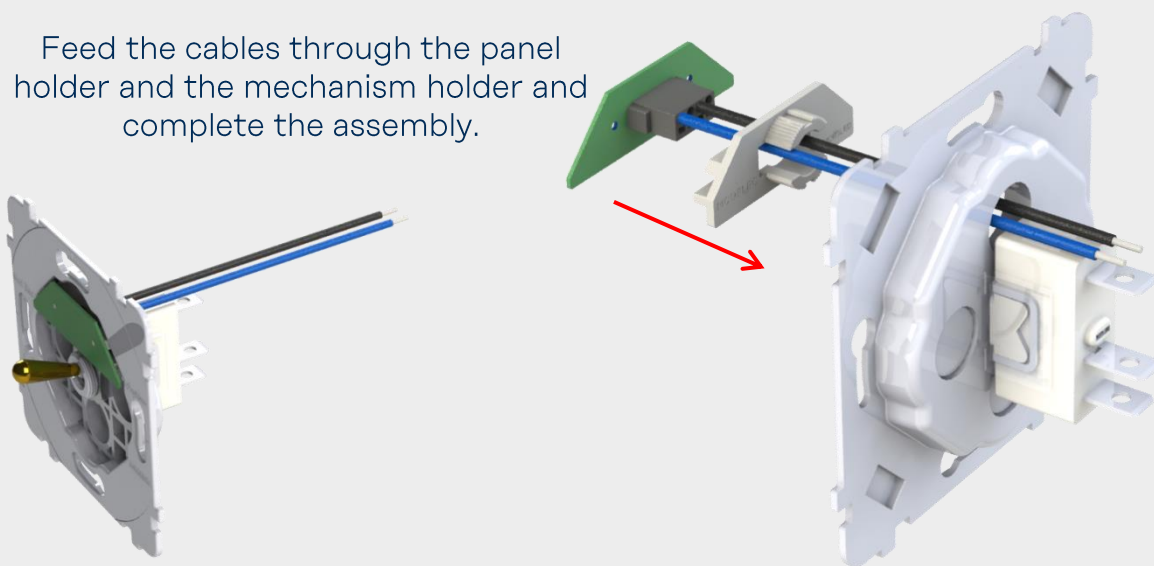
## 2 FITTING

Plug in the cables according to the number and position of the LEDs  
(see wiring diagrams below).

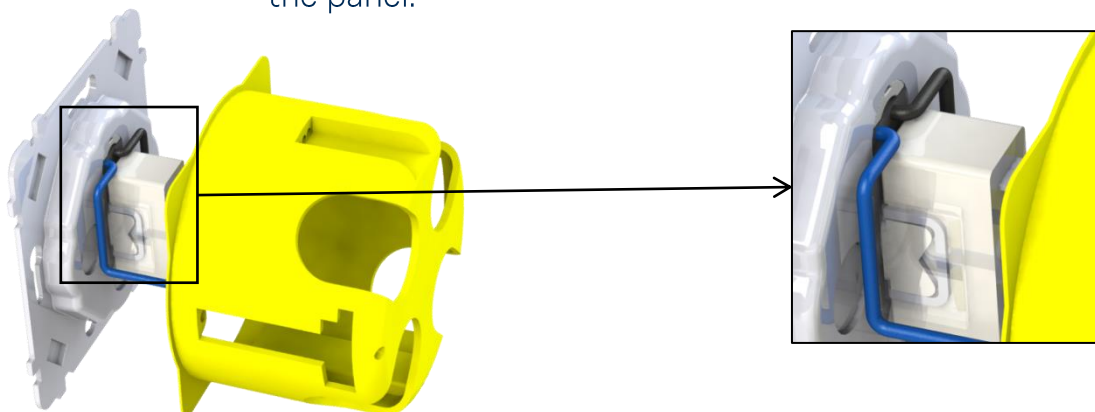
The cable should be folded back on itself, to prevent the cable being stripped during handling.



Feed the cables through the panel holder and the mechanism holder and complete the assembly.



Fold the cables neatly aside as they leave the terminal block to keep the area clear and to avoid pressure on the panel.

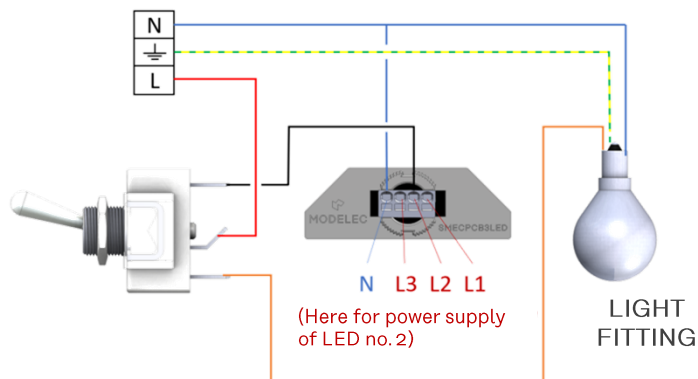


## 3 WIRING

### SINGLE LIGHT

#### SLEEP MODE / WITH NEUTRAL

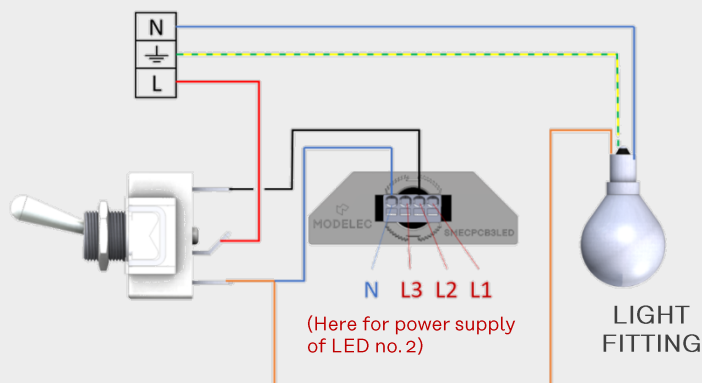
Lamp on = LED off  
Lamp off = LED on



### SINGLE LIGHT

#### SLEEP MODE / WITHOUT NEUTRAL

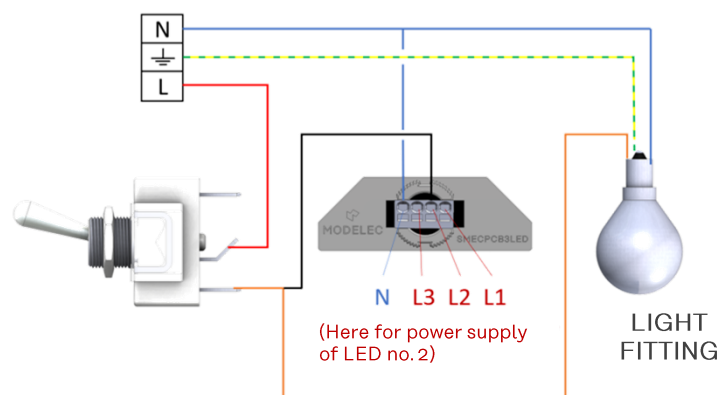
Lamp on = LED off  
Lamp off = LED on



### SINGLE LIGHT

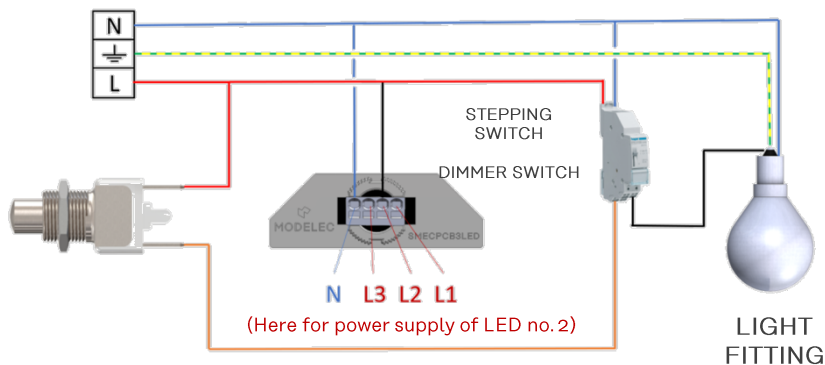
#### ACTIVE MODE / WITH NEUTRAL

Lamp on = LED on  
Lamp off = LED off



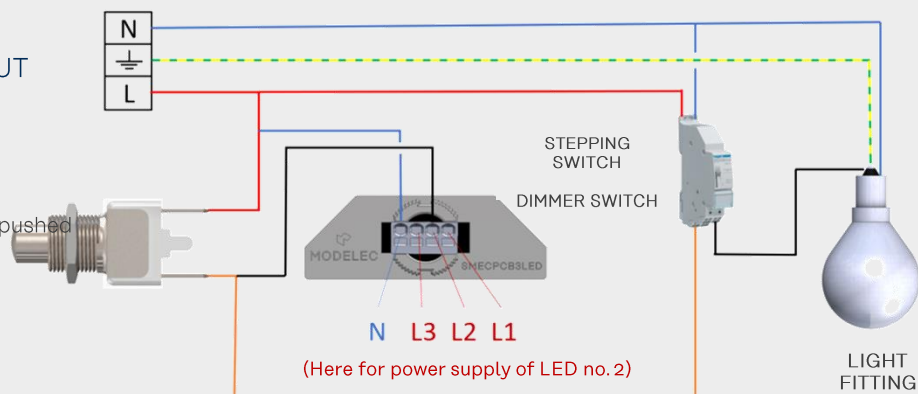
PERMANENT MODE / WITH  
NEUTRAL

The LED goes off as soon as the button is pushed



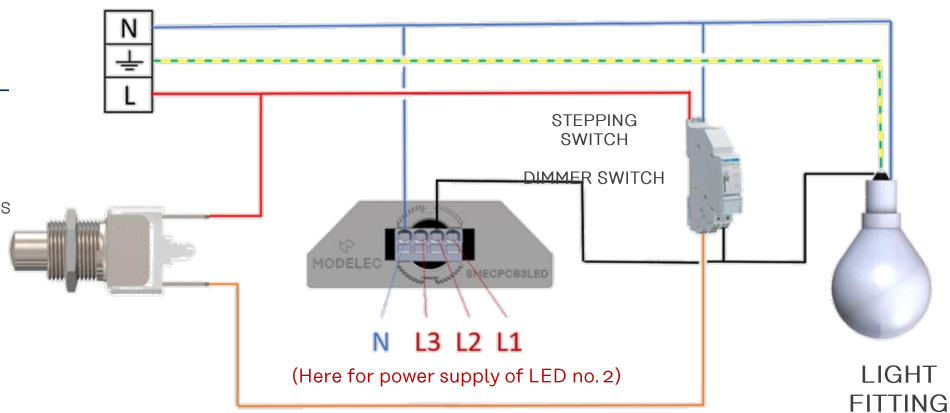
## PERMANENT MODE / WITHOUT NEUTRAL

The LED goes off as soon as the button is pushed



ACTIVE MODE / WITH NEUTRAL

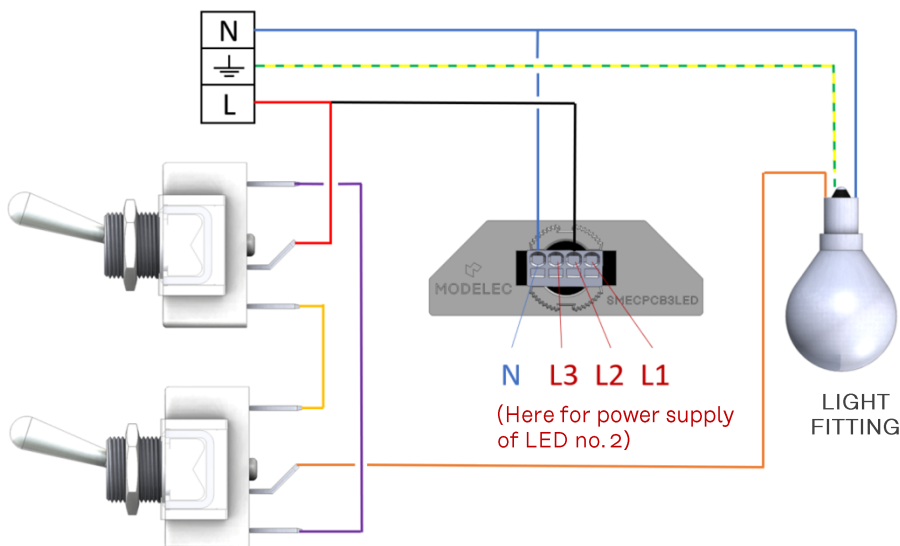
The LED goes off as soon as the button is pushed



## TOGGLE SWITCH

### PERMANENT MODE / WITH NEUTRAL

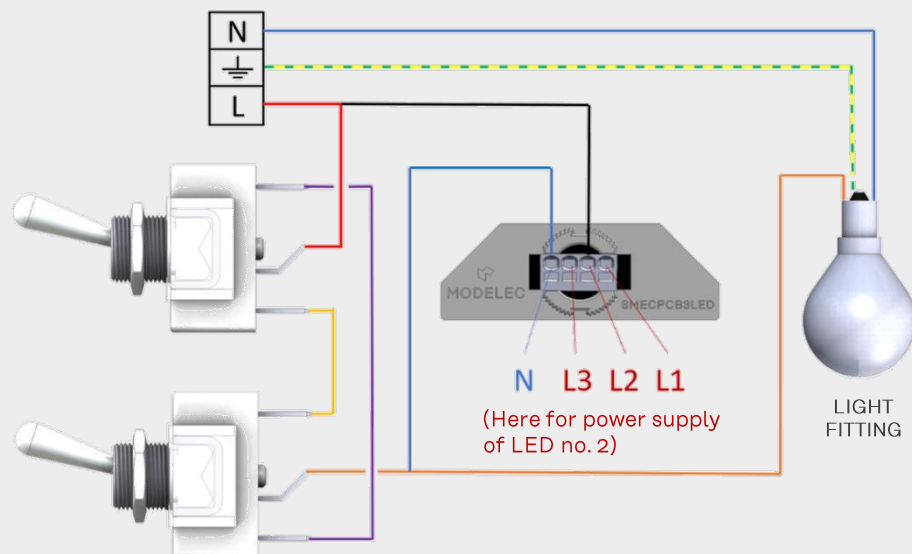
Lamp on = LED on  
Lamp off = LED on



## TOGGLE SWITCH

### SLEEP MODE / WITHOUT NEUTRAL

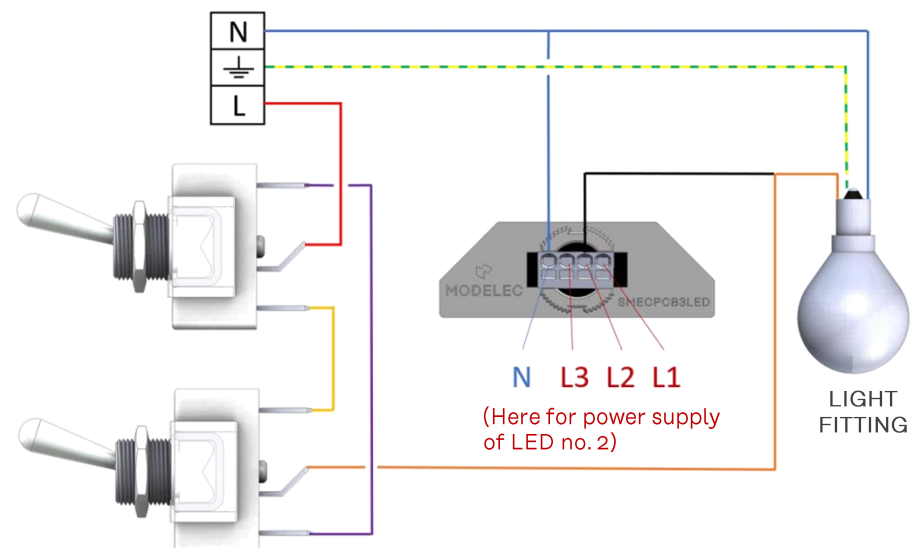
Lamp on = LED off  
Lamp off = LED on



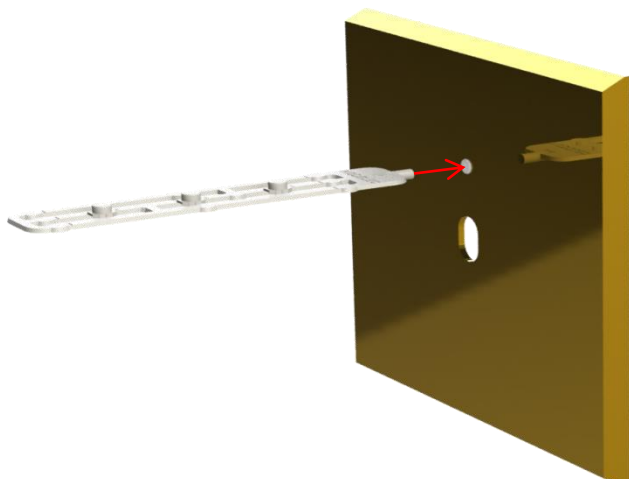
## TOGGLE SWITCH

### ACTIVE MODE / WITH NEUTRAL

Lamp on = LED on  
Lamp off = LED off



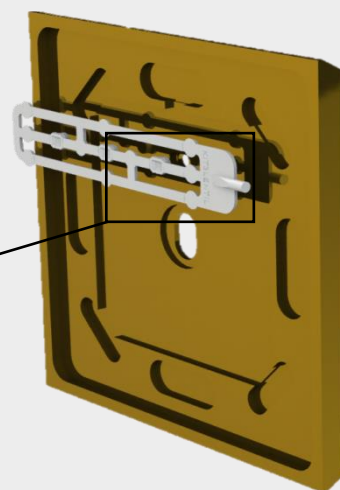
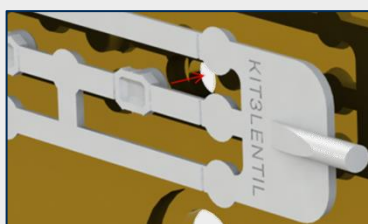
## 4 LENS CHANGE



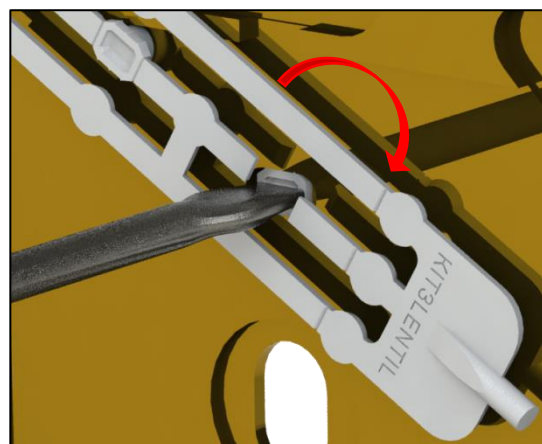
*The coloured lenses are interchangeable. MODELEC supplies 2 lenses with its LEDs: warm white and cool white. Add the reference LEDRVB for blue, green or red lenses.*

Use the lens carrier to remove the lens to be replaced.

Position the new snap-on lens in the rear housing using the carrier and plug it in with a 4mm wide flat screwdriver.



Remove the carrier by rotating it, while holding the lens in its housing.



## 5 TABLE OF RELEVANT REFERENCES

### LEVERS



131-4XXM-L Single cover plate + 1 rocker switch + 1 LED

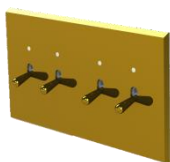
132-4XXM-L Single cover plate + 2 rocker switches + 2 LEDs

133-4XXM-L Single cover plate + 3 rocker switches + 3 LEDs



152-4XXM-L Dual vertical cover plate + 2 rocker switches + 2 LEDs

154-4XXM-L Dual vertical cover plate + 4 rocker switches + 4 LEDs



172-4XXM-L Dual horizontal cover plate + 2 rocker switches + 2 LEDs

174-4XXM-L Dual horizontal cover plate + 4 rocker switches + 4 LEDs

### PUSH-SWITCHES



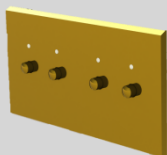
141-4XXM-L Single cover plate + 1 PUSH-SWITCH + 1 LED

142-4XXM-L Single cover plate + 2 PUSH-SWITCHES + 2 LEDs



162-4XXM-L Dual vertical cover plate + 2 PUSH-SWITCHES + 2 LEDs

164-4XXM-L Dual vertical cover plate + 4 PUSH-SWITCHES + 4 LEDs



182-4XXM-L Dual horizontal cover plate + 2 PUSH-SWITCHES + 2 LEDs

184-4XXM-L Dual horizontal cover plate + 4 PUSH-SWITCHES + 4 LEDs