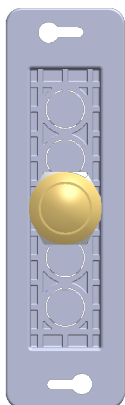
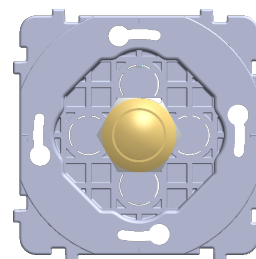


EL



Face-mounted button



S

## 1 INSTRUCTIONS AND RECOMMENDATIONS



Switch off the mains before commencing any work



Strip the wires back for about 12mm  
Cable cross-section 0.5 min / 2.5mm<sup>2</sup> max



Mechanisms with screw terminals


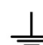


For single units, use casings 50mm deep,  
diameter 67 or 68mm

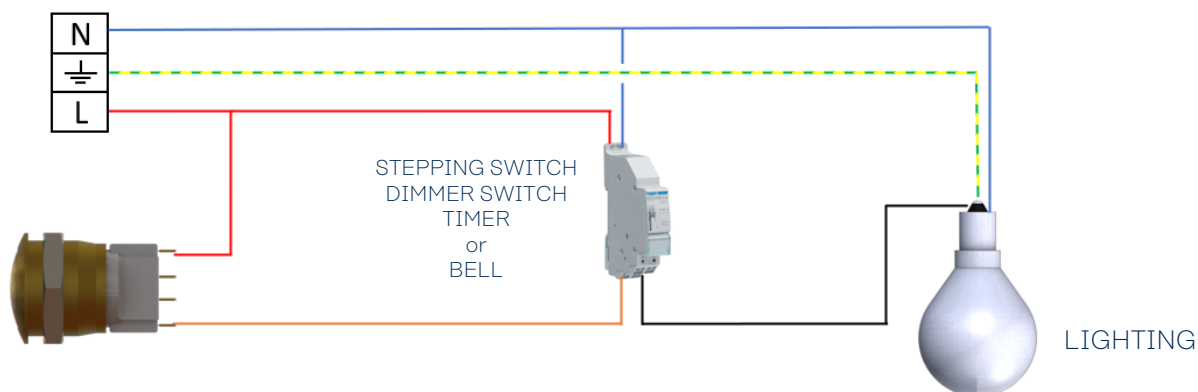
## 2 WIRING

 N neutral – blue cable

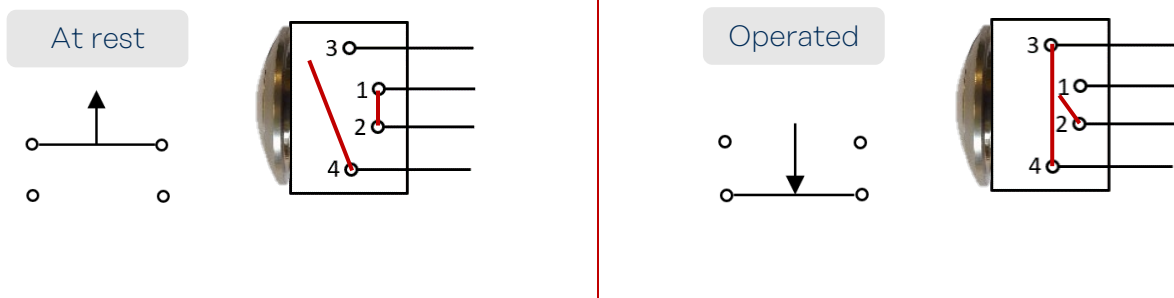
 L phase – red cable

  earth – green/yellow cable

Push button + Modular unit



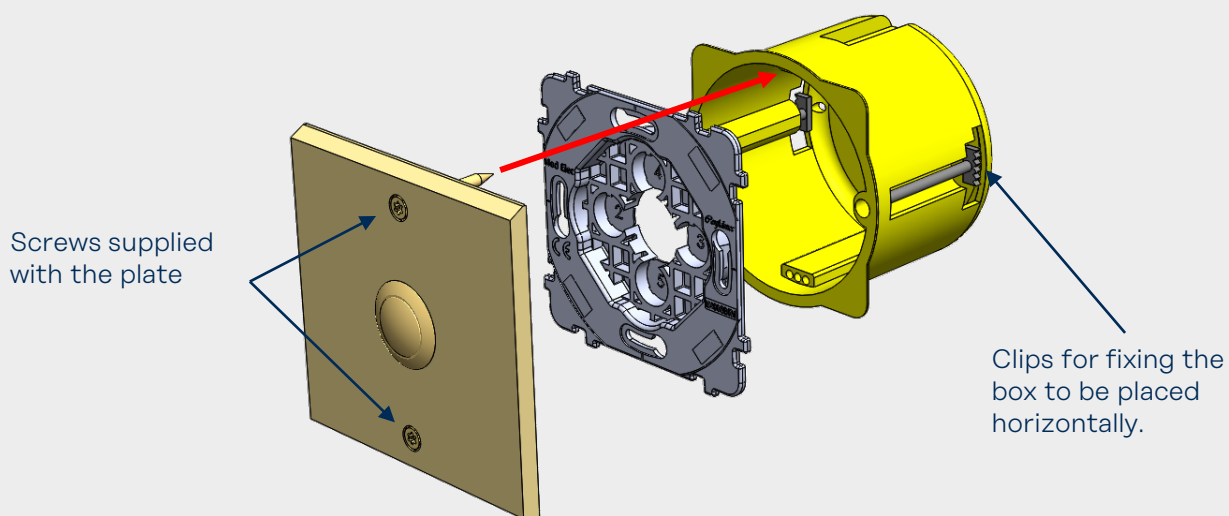
## CONTACTS Principle of contact pad



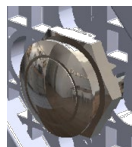
Depending on wiring, NC or NO operation can be defined  
Features: 4A 250VAC / 8A 125VAC - UL/CSA

## 3 FITTING

After wiring according to the instructions, place the mechanism in the flush-mount box and screw on the plate as shown in the diagrams below.



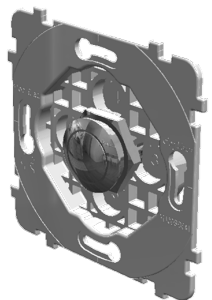
## 4 TABLE OF RELEVANT REFERENCES



073



074

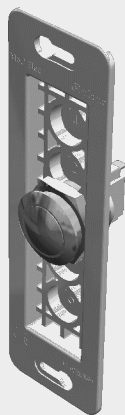


### Reference and description:

07x-151G S 1 Universal round push button (NC-NO)

### Compatible with:

Confidence Collection



07x-051G EL 1 Universal round push button (NC-NO)

07x-052G EL 2 Universal round push button (NC-NO)

Confidence Collection

## 5 CERTIFICATIONS

The 07x push mechanisms comply with the NF EN 60-669-01 standard, according to test report no. 149741-706752A produced by the LCIE on 13/04/2018.

