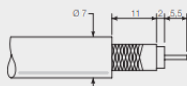


1 INSTRUCTIONS AND RECOMMENDATIONS



Switch off the mains before commencing any work



Strip the wires back along a length of about 19mm



For single units, use casings 50mm deep, diameter 67 or 68mm

2 WIRING AND PROPERTIES

	dB	mA	Back voice	Band 1	FM Band	VHF	UHF	SAT
			4-30 MHz	47-68 MHz	87,5-108 MHz	120-470 MHz	470-862 MHz	950-2400 MHz
1-input socket		500mA	TV		FM	TV		SAT
2-input socket								

Technical characteristics

Impedance: 75 Ohms

Connection:

TV: male

FM: female

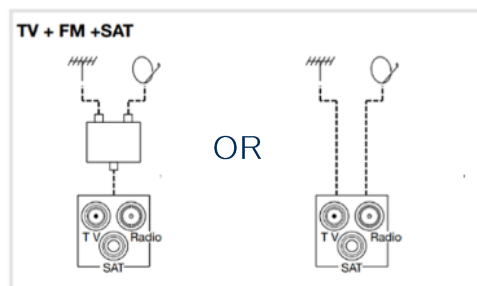
SAT: "F" type

Standards:

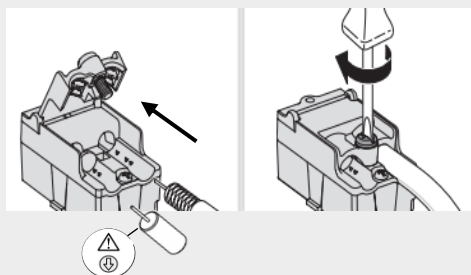
NF EN 50083

UTE 90123

UTE 90125

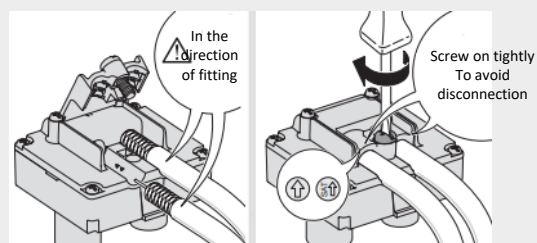


TV + FM + SAT for
residential/collective housing



- Unscrew and open the rear compartment
- Insert the stripped cable and the suppressor
- Screw the compartment back on

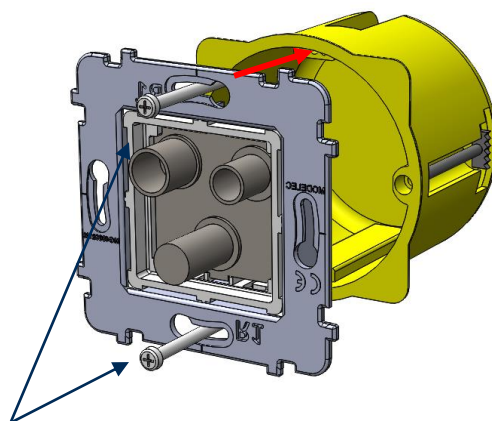
TV + FM + SAT for
residential/private housing



- Unscrew and open the rear compartment
- Insert stripped cables
- Left TV+FM
- Right SAT
- Screw the compartment back on

3 FITTING

After wiring according to the instructions, place the mechanism in the flush-mount box and screw on the plate according to the diagram opposite.

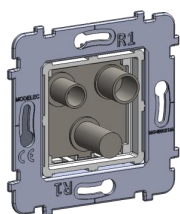


Screws supplied with the
flush-mount box.

4 TABLE OF RELEVANT REFERENCES

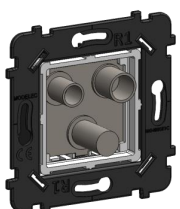
Reference and description:

Compatible with:



087-370G S TV FM SAT SOCKET SINGLE INPUT
087-380G S TV FM SAT SOCKET DUAL INPUT

Confidence Collection



087-370B S TV FM SAT SOCKET SINGLE INPUT
087-380B S TV FM SAT SOCKET DUAL INPUT

Hitera and Désir Collection

5 CERTIFICATIONS

The product complies with the NF EN 50083 – UTE 90123 – UTE 90125 standard