

1 INSTRUCTIONS AND RECOMMENDATIONS



Switch off the mains before commencing any work



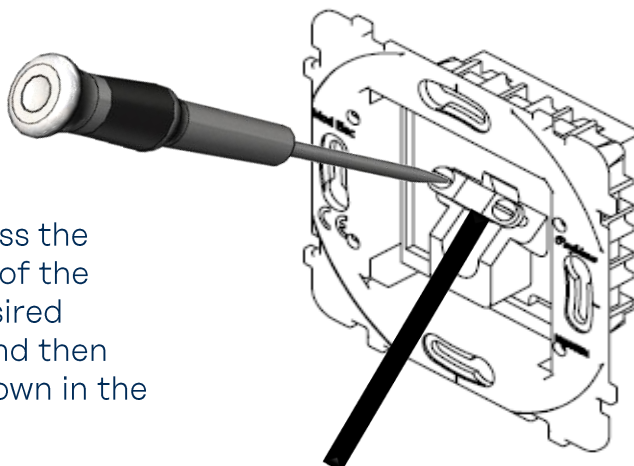
Mechanisms with screw terminals



For single units, use casings 50mm deep, diameter 67 or 68mm

2 WIRING

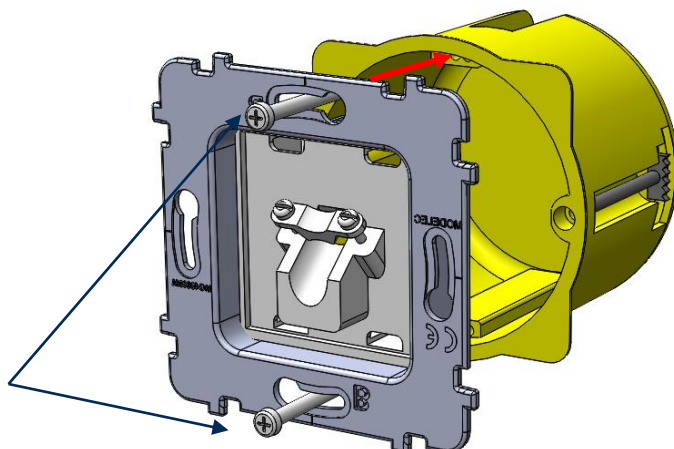
Release the clamp and pass the cable through the centre of the mechanism. Allow the desired length to pass through, and then tighten the bracket as shown in the diagram opposite.



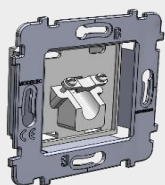
3 FITTING

After wiring according to the instructions, place the mechanism in the flush-mount box and screw on the plate according to the diagram opposite.

Screws supplied with the flush-mount box.



4 TABLE OF RELEVANT REFERENCES

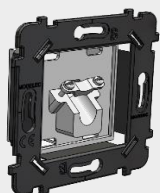


Reference and description:

087-190G S CABLE OUTLET

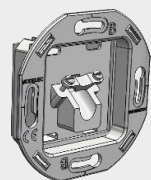
Compatible with:

Confidence Collection



087-190B S CABLE OUTLET

Désir, Karo and Hitera Collection



087-190W S CABLE OUTLET

Iris Collection

5 CERTIFICATIONS

